



RESIDENTIAL

THE ENDEAVOUR

Oil Hydraulic Residential Lift

AUSSIE LIFTS



“The first in our line of oil hydraulic lifts, the Endeavour’s powerful drive system offers extra weight capacity & flexibility in car sizing & finishes, whilst staying budget conscience.”

For many, the decision to install a lift into their home is often a necessity. Upon researching, deciding which model to choose from in terms of reliability, cosmetic options & on-going maintenance costs can become quite daunting.

This is where the Endeavour removes the perplexity of buying a lift. Manufactured in Australia, by a family owned & operated business, the Endeavour can be custom built within short lead times.

Available in two standard sizes, the Endeavour offers an array of different style swing action landing doors & lift car linings to set the scene.

Perfect for two storey homes with high ceilings or split levels, the Endeavour has the ability to travel a distance of 4 metres & can be easily installed into a new or existing home.

Supplied as a complete free-standing unit with it’s own self supporting tower, doors, hydraulics, pump & machine cabinet, the Endeavour has no need for load bearing walls or a machine room. This is a huge saving & one that needs to be considered when comparing the overall cost of the Endeavour against other lifts.

Powered by two oil hydraulic cylinders, the Endeavour has the ability to carry 350kg in weight, is extremely reliable, quiet in operation & low in maintenance.

OIL HYDRAULICS

Fitted with oil hydraulic cylinders on both sides of the lift, the Endeavour offers a controlled ride with little effort. This means the extra power of an oil hydraulic lift provides flexibility in the lift car size & cosmetic finishes without affecting the lift’s performance.

A tried & tested means of hoisting, the direct acting oil hydraulic cylinders do require either additional space above the lift top of shaft or the cylinders trenched below the standard 100mm pit.

A variable measurement, the length of the hydraulic cylinders is reflective of the height the lift car needs to travel (FFL to FFL). For further details, please contact one of our trained lift consultants

Optional Feature - For improved floor levelling accuracy & smoother lift operation, the addition of a VVF drive to the hydraulic pump motor gives the lift the performance commonly found only on high end residential lift control systems.

STANDARD SAFETY FEATURES

Supplied with an impressive list of standard safety features, the Endeavour offers peace of mind with it’s in-car emergency telephone, infra-red door sensors, emergency battery backup lowering system & lighting. On top of that, the Endeavour has a very easy to use manual lowering valve, should the lift car ever need to be lowered.

Cost Effective

- ▶ Self supporting lift tower - no load bearing walls required
- ▶ No separate machine room construction required
- ▶ Low installation/home construction costs
- ▶ Low running costs/power consumption
- ▶ Single phase 240v power
- ▶ Once a year maintenance

Safety

- ▶ Reliable & safe oil hydraulic system
- ▶ Emergency battery backup lowering system & lighting
- ▶ Additional manual lowering facilities
- ▶ Internal phone & emergency stop function
- ▶ 3 beam photo electric sensors across the door entrance
- ▶ Key lockable push button controls

Peace of Mind

- ▶ Manufactured by a family owned & operated company
- ▶ Australian made to Australian Standards
- ▶ Built to superior specifications using quality materials
- ▶ Lift delivered, installed & tested by qualified lift technicians
- ▶ Custom built to your specifications
- ▶ Unrivalled after-sales service

LIFT TOWER

Built as a free-standing, self-supporting unit & weighing approx 500kg, the lift tower is fabricated from aluminium & comes complete with doors, door jambs, flashings, electrical wiring & hydraulic cylinders.

Easily incorporated into a new or existing home, the Endeavour shaft can be set up for cladding to be applied directly to it’s framework depending on the space & architectural needs.

To eliminate the need for a secondary door on the lift car, the section of shaft between the two landing doors is fitted internally with panelling to create a flush running surface.

LIFT CAR

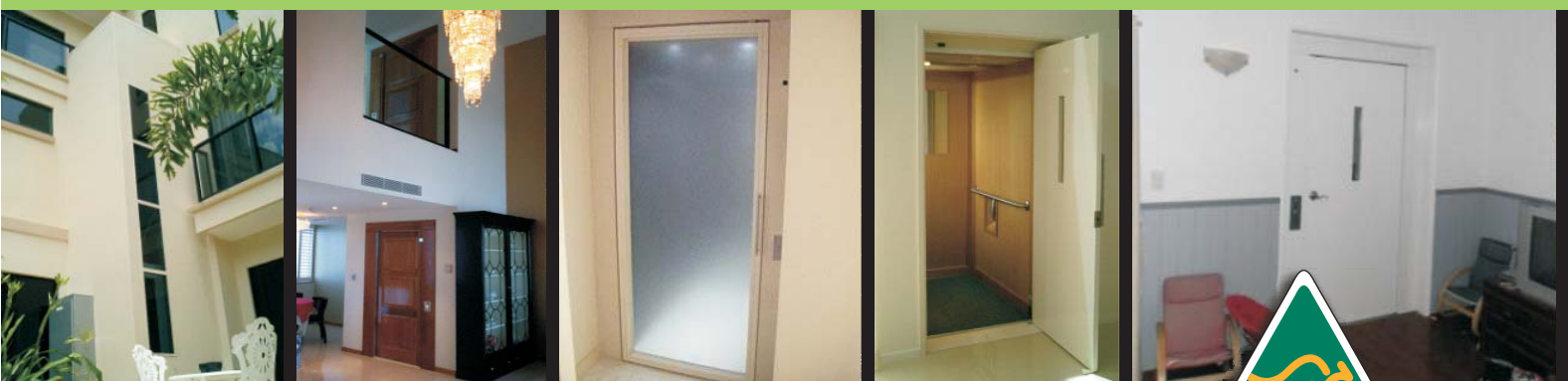
Available in two styles of configuration:

- ▶ Single entry **“A Model”** with entry & exiting on the same side
- ▶ Dual entry **“B Model”** with entry at the front & exiting via the rear.

Lift cars can be individually built to the customer’s requirements - up to a maximum floor space of 1.6m².

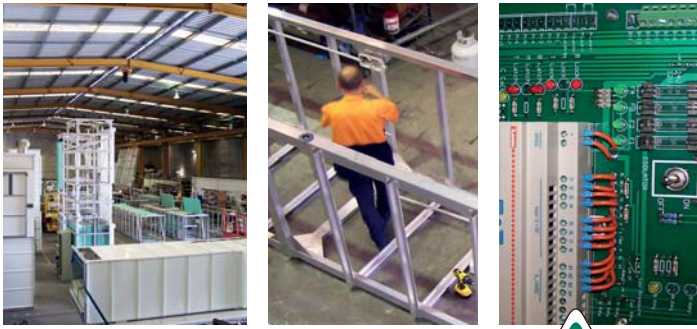
Lift car sizes are as follows:

- ✓ **STANDARD MODEL** W: 900mm x D:1300mm x H: 2100mm
- ✓ **DELUXE MODEL** W: 1100mm x D:1400mm x H: 2100mm



Proudly Australian Owned, Australian Designed & Australian Made





Why buy Australian Made?

- ▶ Built to Australian Standards
- ▶ Confidence in Quality
- ▶ Short lead times
- ▶ Parts readily available
- ▶ Jobs created in Australia
- ▶ Supporting Australian Economy
- ▶ Profits remain in Australia



LIFT CAR INTERIOR

Available in a number of finishes, the most popular being white colorbond panels fitted with butt joints, the Endeavour can also be finished in Tasmanian Oak trimmed with timber moulding, vinyl or stainless steel.

Depending on the selected finish, the actual size of the lift car may alter.

Standard car features include:

- ✓ Stainless steel handrail
- ✓ Non - slip floor covering indoor/outdoor carpet
- ✓ Recessed emergency telephone
- ✓ 2-4 recessed down lights
- ✓ 3 beam photo electric sensors across the door entrance

Optional full length stainless steel control panels are also available.

LANDING DOORS

Fitted with swing action doors with a mechanical interlock, adjustable automatic door closer & electrical interlock, the whole assembly is part of the lift shaft.

Door styles include:

- ✓ Redicote flush door with optional glass view panel
- ✓ Patterned door from the Corinthian & Hume internal range
- ✓ Metal door with optional glass view panel
- ✓ Glass door

To assist in the operation of the doors, door hold open devices, automatic door operators or sensory operation can be fitted to the landing doors as an optional extra.

Door size for **standard** lift car: 870mm wide x 2040mm high.

Door size for **deluxe** lift car: 920mm wide x 2040mm high.

Lift can be supplied with 2340mm high doors

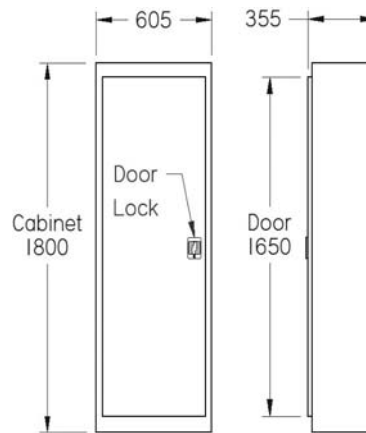
STATIONS

Mounted on a stainless steel plate with round stainless steel illuminated buttons, the electric controls are automatic in operation & key lockable to prevent unwanted usage.

To eliminate the possibility of the lift car being called by another user on arrival, the Endeavour is fitted with a 5 second non-reversal timer.

MACHINE CABINET

The Endeavour uses a separate lift machine cabinet that creates a more compact lift design & eliminates costly machine room construction.



Fabricated from metal & powdercoated, to withstand the external elements, the cabinet is mounted at the ground level for easy access for emergency & maintenance purposes.

Provided with a key lockable door, the cabinet contains the hydraulic power unit, oil tank, hydraulic control valves, electrical control board, emergency power supply, cabinet lighting, emergency tools & instructions.

INSTALLATION

Supplied, assembled & pretested, the design of the Endeavour allows for easy installation by either craning in, dismantling or manoeuvring into place.

Able to be installed within 3 - 4 days, the Endeavour is perfect for new or existing homes as the time on site is minimal.

ELECTRICAL REQUIREMENTS

The standard & deluxe models all have the same economical power requirements.

- ▶ 240volt. Single Phase. 16amp RCD protected
- ▶ Active analog telephone line

MAINTENANCE

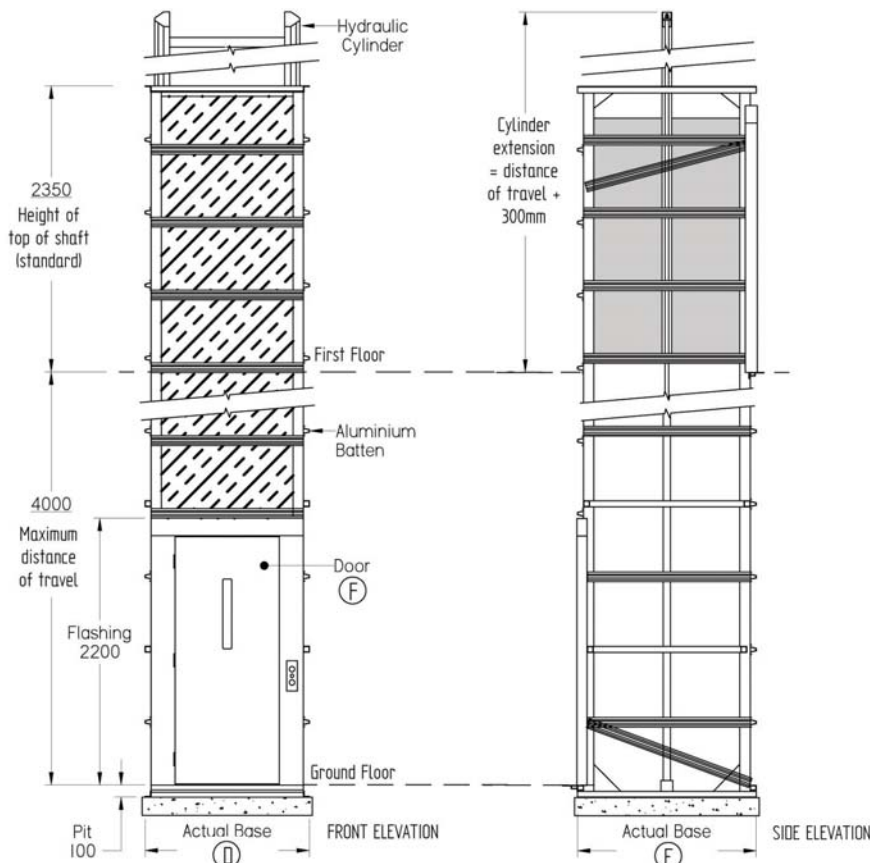
For optimum performance, reliability & long term use, the lift should be serviced every 12 months by an approved lift technician.

WARRANTY

The lift equipment provided is covered for 12 - 24 months, excluding malicious damage and/or misuse.



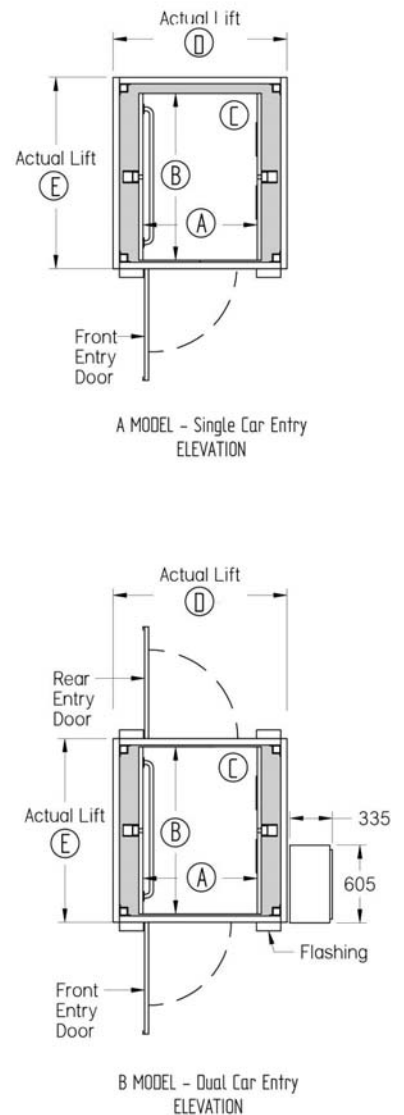
THE ENDEAVOUR



Lift Measurements						
Description	Car Width	Car Depth	Car Height	Shaft Width	Shaft Depth	Door Width
Key	A	B	C	D	E	F
Single entry - Standard	900	1300	2100	1350	1470	870
Dual entry - Standard	900	1300	2100	1350	1410	870
Single entry - Deluxe	1100	1400	2100	1575	1585	920
Dual entry - Deluxe	1100	1415	2100	1575	1525	920

NOT FOR CONSTRUCTION

PLEASE NOTE: If overhead height is an issue for the cylinder extension, they can be lowered into a trench below the lift's standard 100mm pit. These are indicative drawings. Please speak to one of our friendly Lift Consultants for further information on lift requirements.



MAIN SPECIFICATIONS

- Carrying Capacity:** 350kg
- Car Size:** Standard - 900W x 1300D x 2100Hmm
Deluxe - 1100W x 1400D x 2100Hmm
- Door Size:** Standard - 870mm x 2040Hmm
Deluxe - 920mm x 2040Hmm
- Maximum Travel:** 4000mm
- Lift Speed:** Standard: Rated speed 0.145 m/sec
- Max No. Of Stops:** 2 with the option of 1 intermediate landing
- Drive System:** Dual oil hydraulic cylinders on each side of the lift car
- Minimum Pit Depth:** 100mm
- Cylinder Extension:** Distance of travel plus 300mm
- Machine Cabinet:** 605W x 335D x 1800Hmm
- Controls:** Automatic operation & key isolation
- Standards:** Meets or exceeds requirements of the Australian Standards Lift code AS1735 Part 18
- Usage:** Residential
- Application:** External or internal
- Installation:** Crane in, dismantle or manoeuvred
- Lift Tower:** Inclusive. Self supporting - no structural walls required. Cladding by others can be attached directly to the lift structure
- Supply Voltage:** 240volt. Single Phase. 16amp RCD protected

Your Local Representative

For additional information, please contact your local Aussie Lifts representative. They will be able to answer any questions you may have.

Southern Lifts

www.southernlifts.com.au
Info@southernlifts.com.au



03 9580 5800

Aussie Lifts Pty Ltd
12 Achievement Crescent
Acacia Ridge QLD 4110
Tel (07) 3274 4211

info@aussielifts.com.au
www.aussielifts.com.au
A.B.N # 92 516 686 505

AUSSIE LIFTS